

Standalone license installation and activation

Attention :

To install Phase Manager it is **highly recommended to have administrator rights**

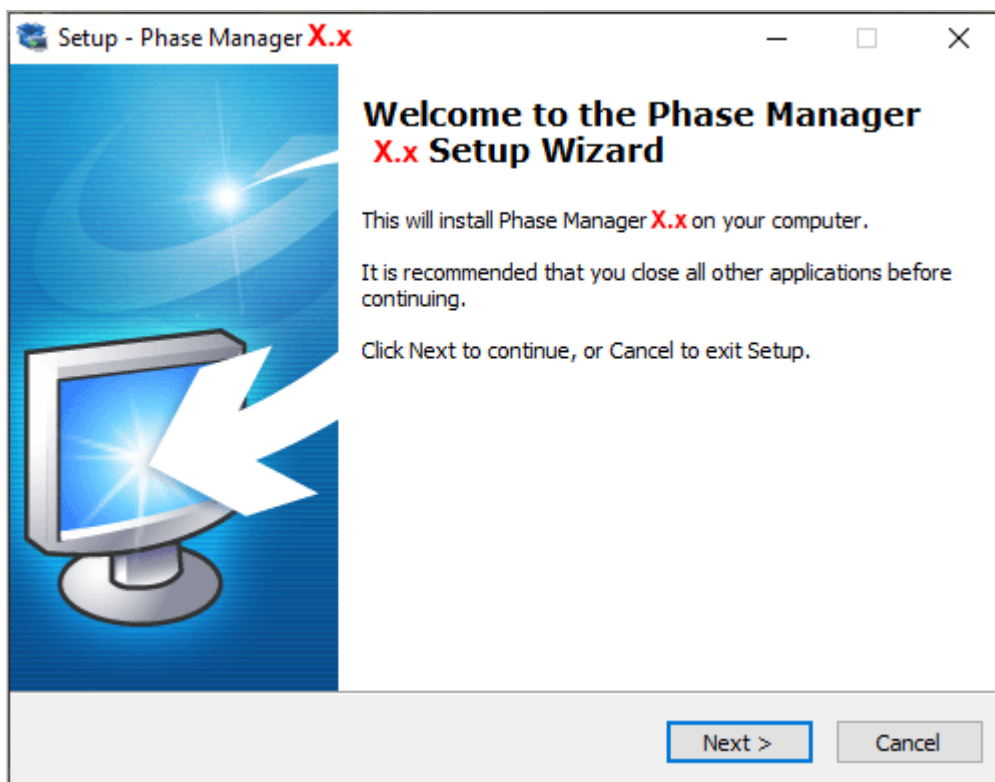
1/ Installation of Phase Manager

Download Phase Manager. **Right click** on the executable than run it with **Administrator rights**

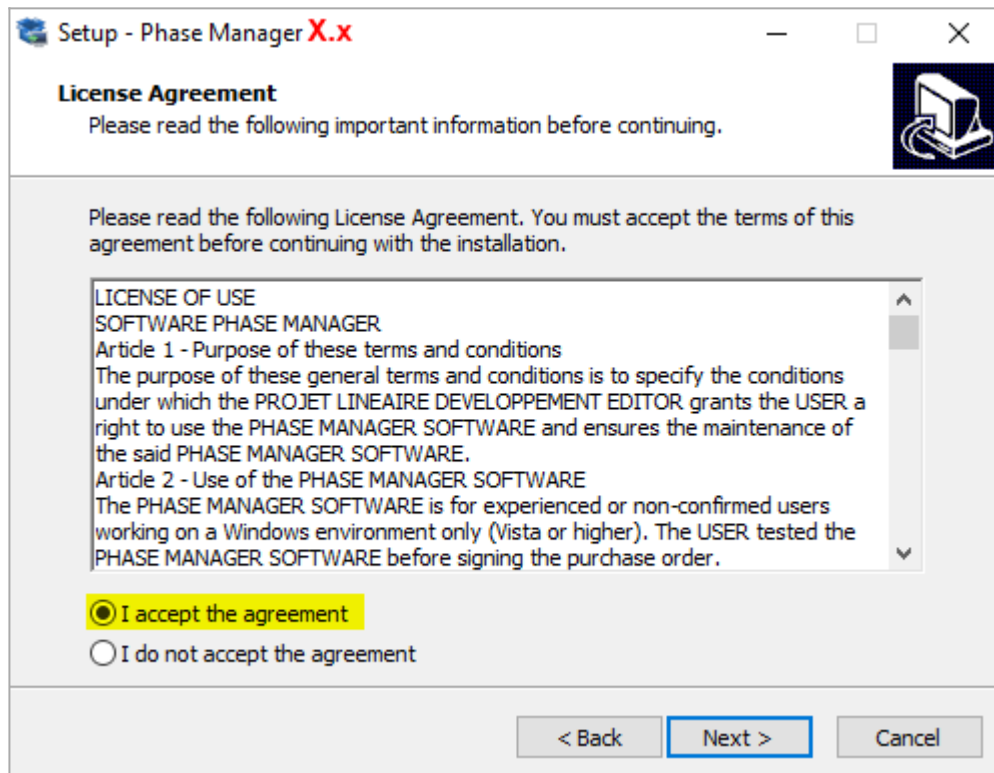
Once launched, choose the installation language:



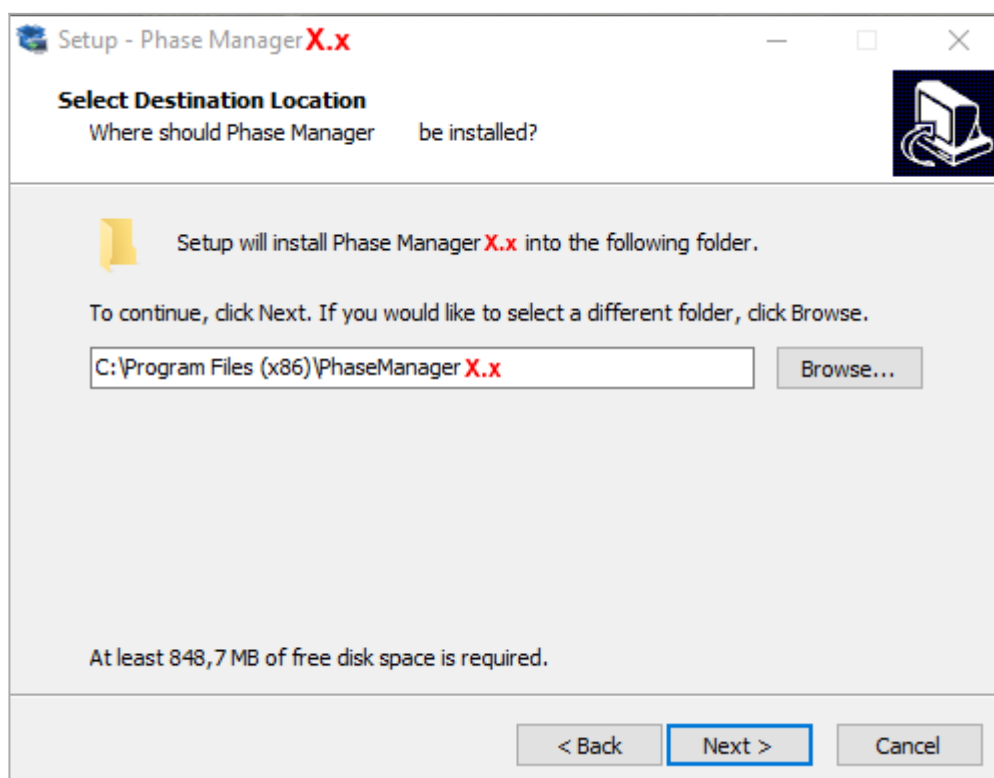
Skip the welcome screen by clicking on **Next** :



Read then accept the license agreement to continue the installation by clicking on **Next** :



By default the setup will ask you to install Phase Manager in : **C:\Program Files (x86)\PhaseManager X**
If you didn't launch it with admin right , it will propose you to install Phase Manager in :
C:\Users\Public\Documents\PhaseManager7



Choose '**Single user installation**'



Validate the Start Menu Folder screen by clicking on **Next** :



Choose and validate the icons creation screen by clicking **Next** :

Select the additional tasks you would like Setup to perform while installing Phase Manager **X.x**, then click Next.

Additional icons:

☒ Create a desktop icon

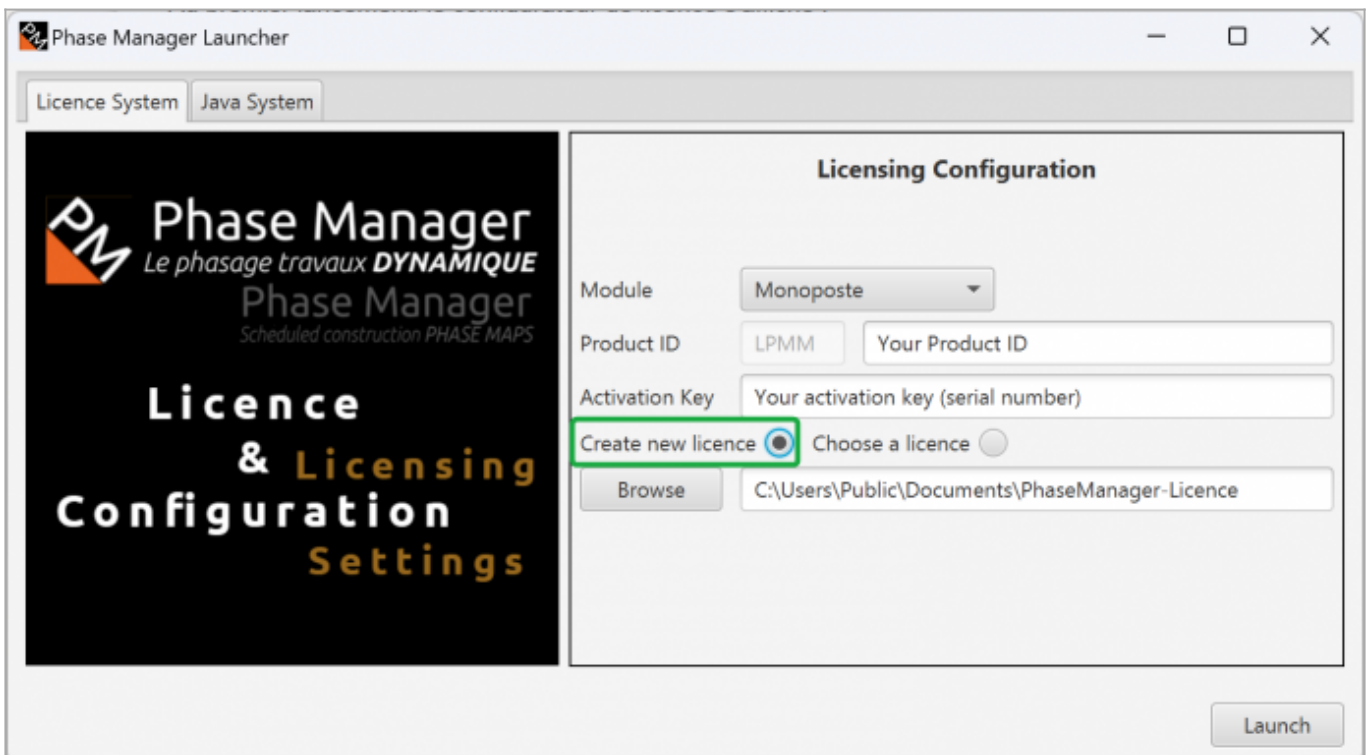
☐ Create a Quick Launch icon

On the following screen click on **Install** then once installation is complete, click on **Finish**

2/ Standalone license configuration

Once Phase Manager 5 is installed, double-click on its icon to launch it.

At first launch, the license configurator will display:



The screenshot shows the 'Phase Manager Launcher' window. It has two tabs: 'Licence System' (selected) and 'Java System'. The main area is titled 'Licensing Configuration'. On the left, there is a large black box with the Phase Manager logo and the text 'Licence & Licensing Configuration Settings'. The right side contains the following fields and controls:

- Module:** A dropdown menu set to 'Monoposte'.
- Product ID:** A text box containing 'LPMM' and a label 'Your Product ID'.
- Activation Key:** A text box containing 'Your activation key (serial number)'.
- License Selection:** Two radio buttons. 'Create new licence' is selected and highlighted with a green box. 'Choose a licence' is unselected.
- Browse:** A button next to a text box containing the path 'C:\Users\Public\Documents\PhaseManager-Licence'.
- Launch:** A button at the bottom right.

To activate your license, you will need to fill in the following fields:

Module

Choose **Monoposte** | **Standalone**

Product ID

Fill in the Product ID that's been sent to you by Projet Linéaire:

- licence pattern : LPMM-00**NNN**0 **X** 00abcDEF (**NNN** is the number of your license, and **X** the version)
- **only paste the right part of your Product-ID, after the '-'**

Activation key

Fill in the Serial number sent to you by Projet Linéaire.

- pattern : VccQX-37eJG-AZIce-EYk7O-temCP-8DRFu

Licence

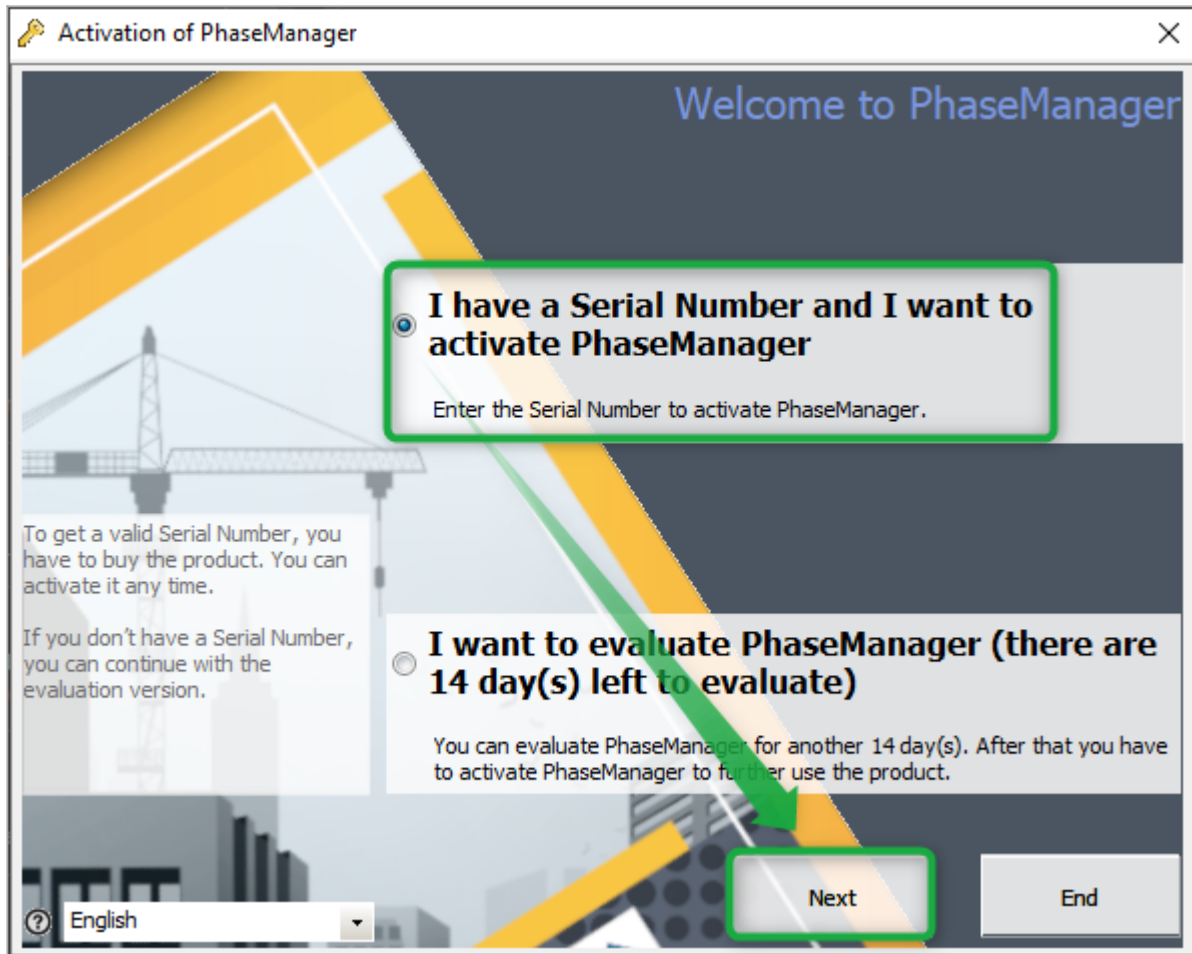
Choose “*Create new licence*”. By clicking on **Browse** you can choose the location of the license file that will be created by Phase Manager : **we recommend to leave the default value.**

3/ License activation

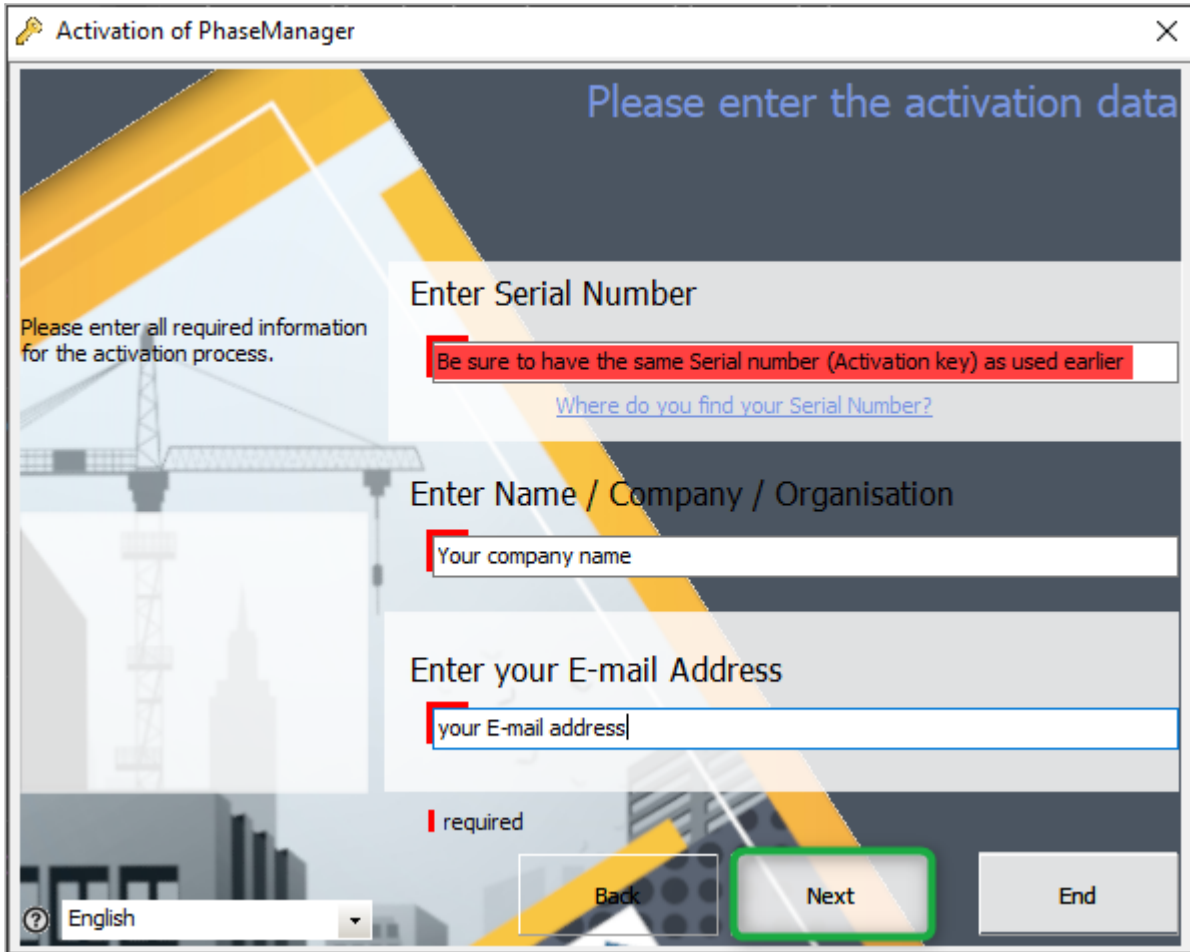
Click now on the button **Launch** to activate your licence.

Beware : an Internet connection is mandatory to activate the license !

To activate the license, switch to English then choose the option below and click on **Next** :



- Fill-in all required data then click on Next:
- **The Serial number is the Activation Key that's been used at step 2 in the license configurator**



Activation of PhaseManager

Please enter the activation data

Please enter all required information for the activation process.

Enter Serial Number

Be sure to have the same Serial number (Activation key) as used earlier

[Where do you find your Serial Number?](#)

Enter Name / Company / Organisation

Your company name

Enter your E-mail Address

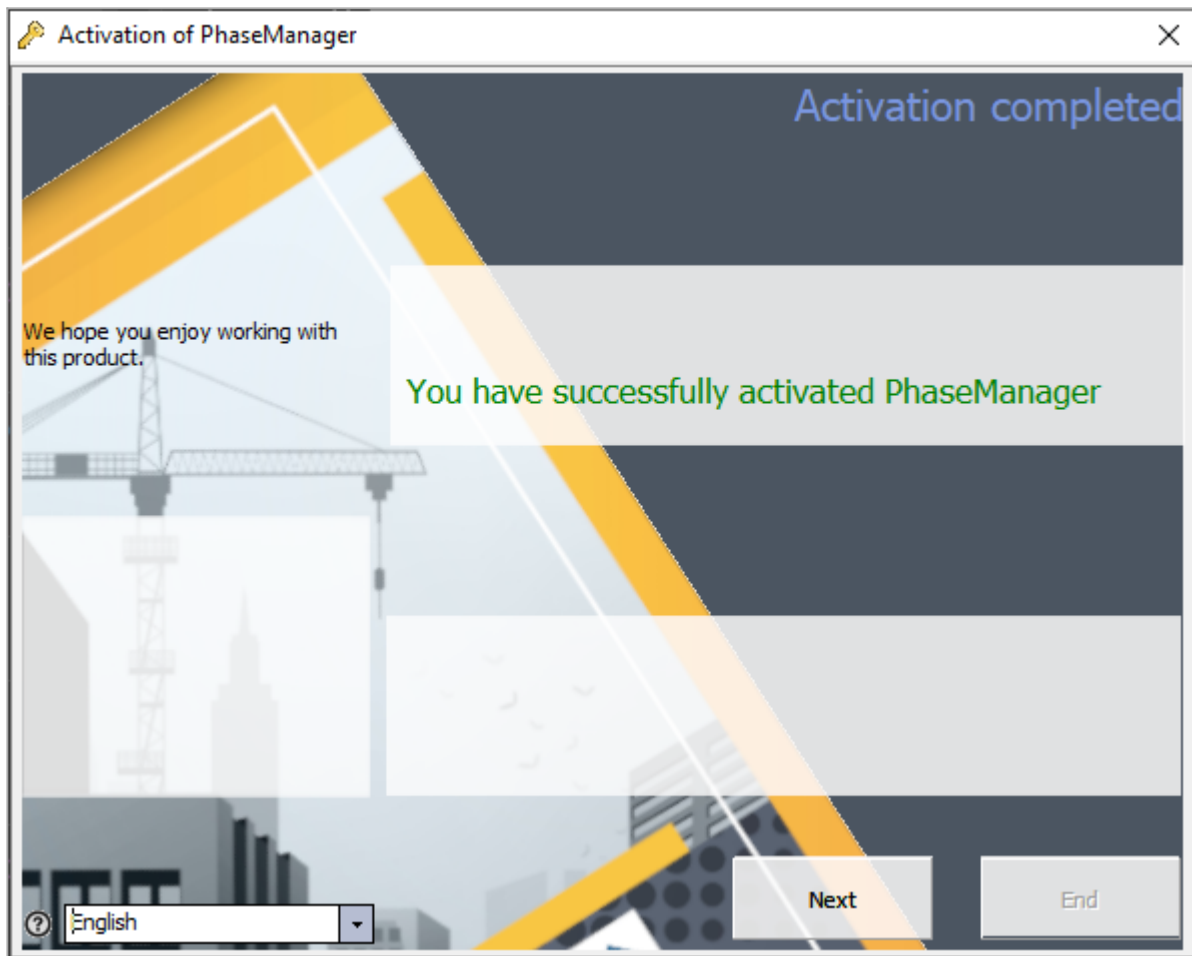
your E-mail address

required

Back Next End

English

- Check that you ARE connected to INTERNET then click on Next twice.
- If the following message is displayed, that means that Phase Manager did activate right. Click on Next to run Phase Manager:



- If you need to, feel free to contact our customer support at support@projetlineaire.com