

USB license installation and activation

Attention :

To install Phase Manager it is **highly recommended to have administrator rights**

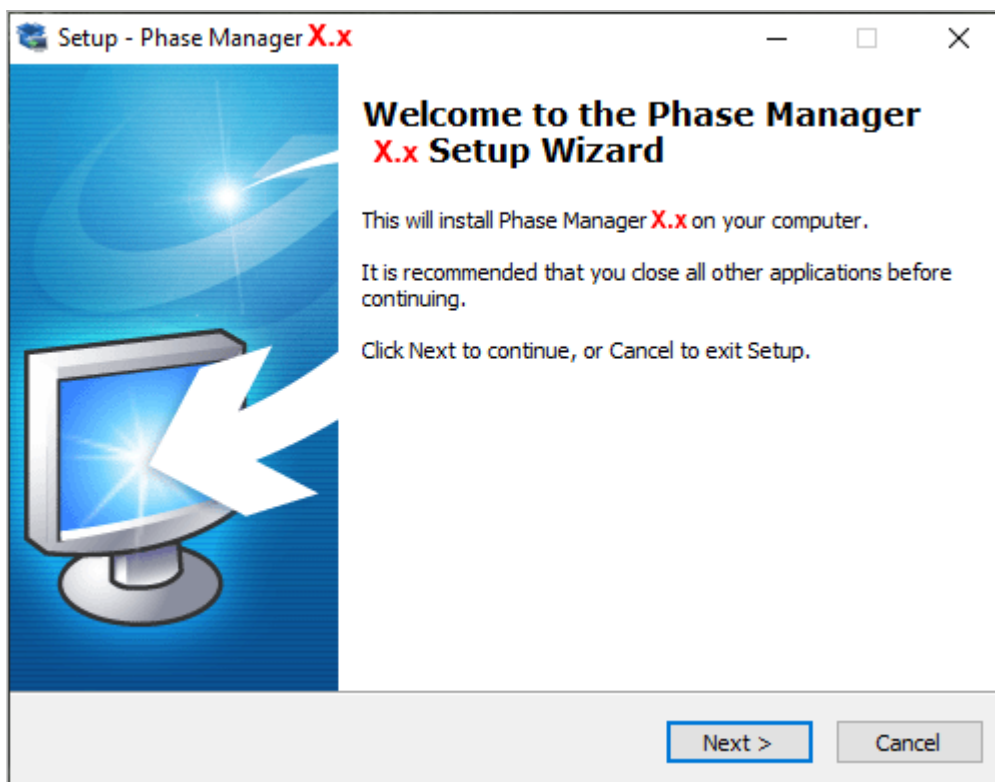
1/ Installation of Phase Manager

Download Phase Manager. **Right click** on the executable than run it with **Administrator rights**

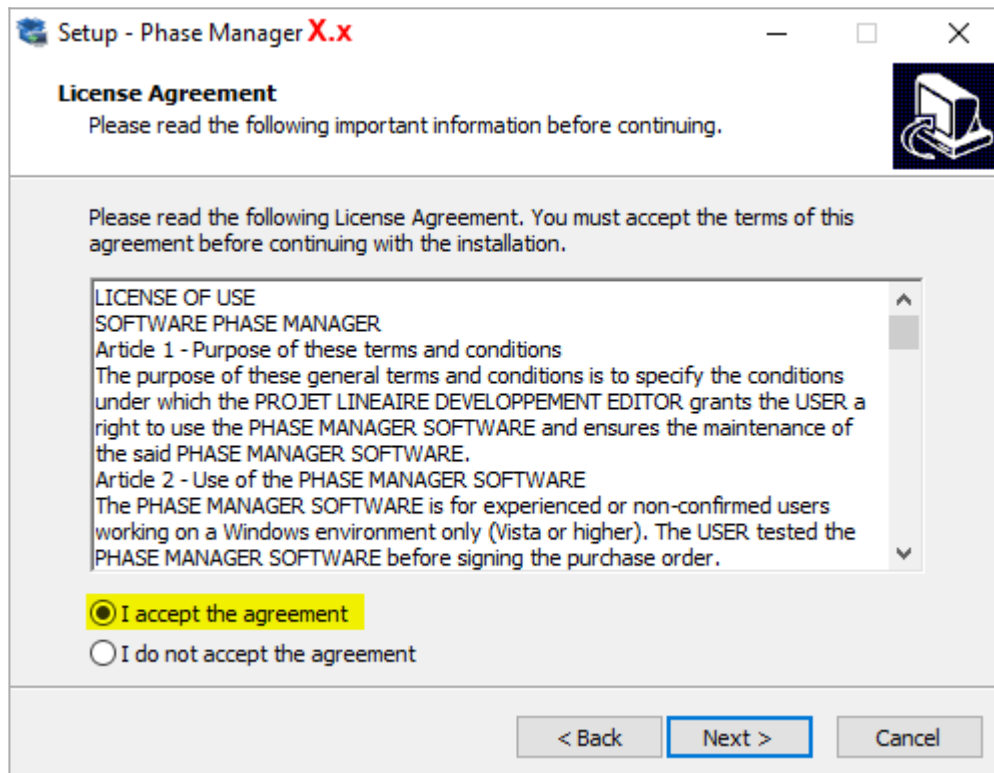
Once launched, choose the installation language:



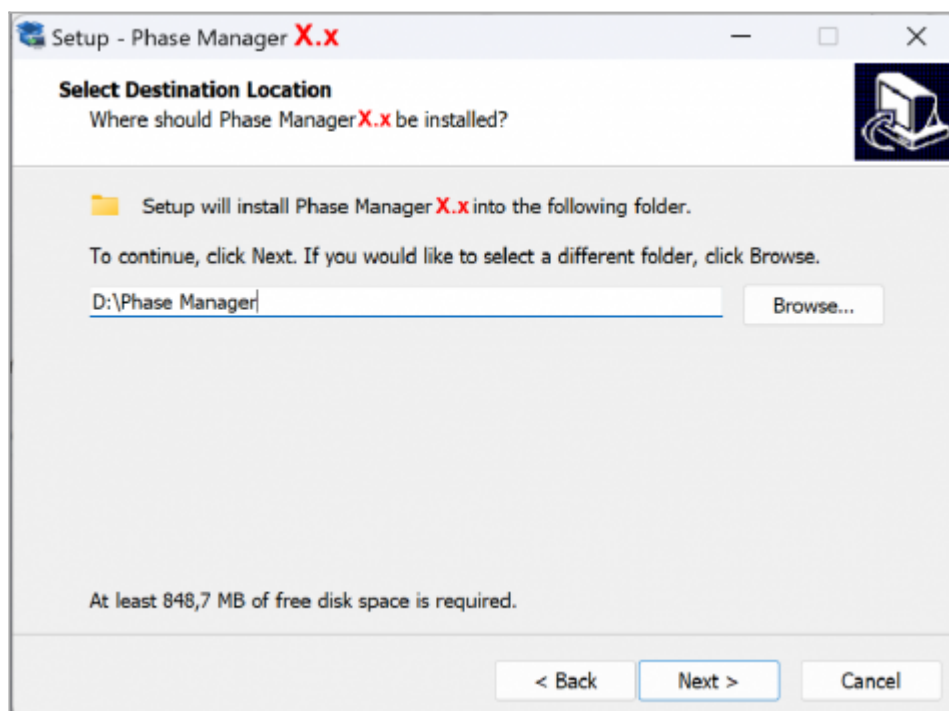
Skip the welcome screen by clicking on **Next** :



Read then accept the license agreement to continue the installation by clicking on **Next** :




Choose a path folder on the USB key (for exemple : *D:\Phase Manager*) then click on **Next** :



Choose '**Portable Installation**'

Select Components
Which components should be installed?



Select the components you want to install; clear the components you do not want to install. Click Next when you are ready to continue.

Portable installation

Validate the Start Menu Folder screen by clicking on **Next** :



Choose and validate the icons creation screen by clicking **Next** :

Select the additional tasks you would like Setup to perform while installing Phase Manager **X.x**, then click Next.

Additional icons:

☒ Create a desktop icon

☐ Create a Quick Launch icon

On the following screen click on **Install** then once installation is complete, click on **Finish**

2/ USB license configuration

Once Phase Manager 5 is installed, double-click on its icon to launch it.
At first launch, the license configurator will display:

To activate your license, you will need to fill in the following fields:

Module

Choose **USB**

Product ID

Fill in the Product ID that's been sent to you by Projet Linéaire:

- licence pattern : LPMU-00NNN0 **X** 00abcDEF (**NNN** is the number of your license, and **X** the version)
- **only paste the right part of your Product-ID, after the '-'**

Activation key

Fill in the Serial number sent to you by Projet Linéaire.

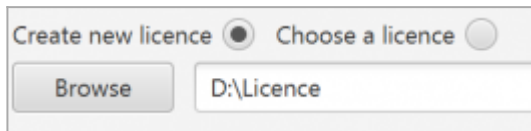
- pattern : VccQX-37eJG-AZlce-EYk7O-temCP-8DRFu

Licence

Choose “*Create new licence*”.

By clicking on **Browse** you can choose the location of the license file that will be created by Phase Manager

Be sure to choose **a path folder on the USB key**, for example : **D:\Licence**.

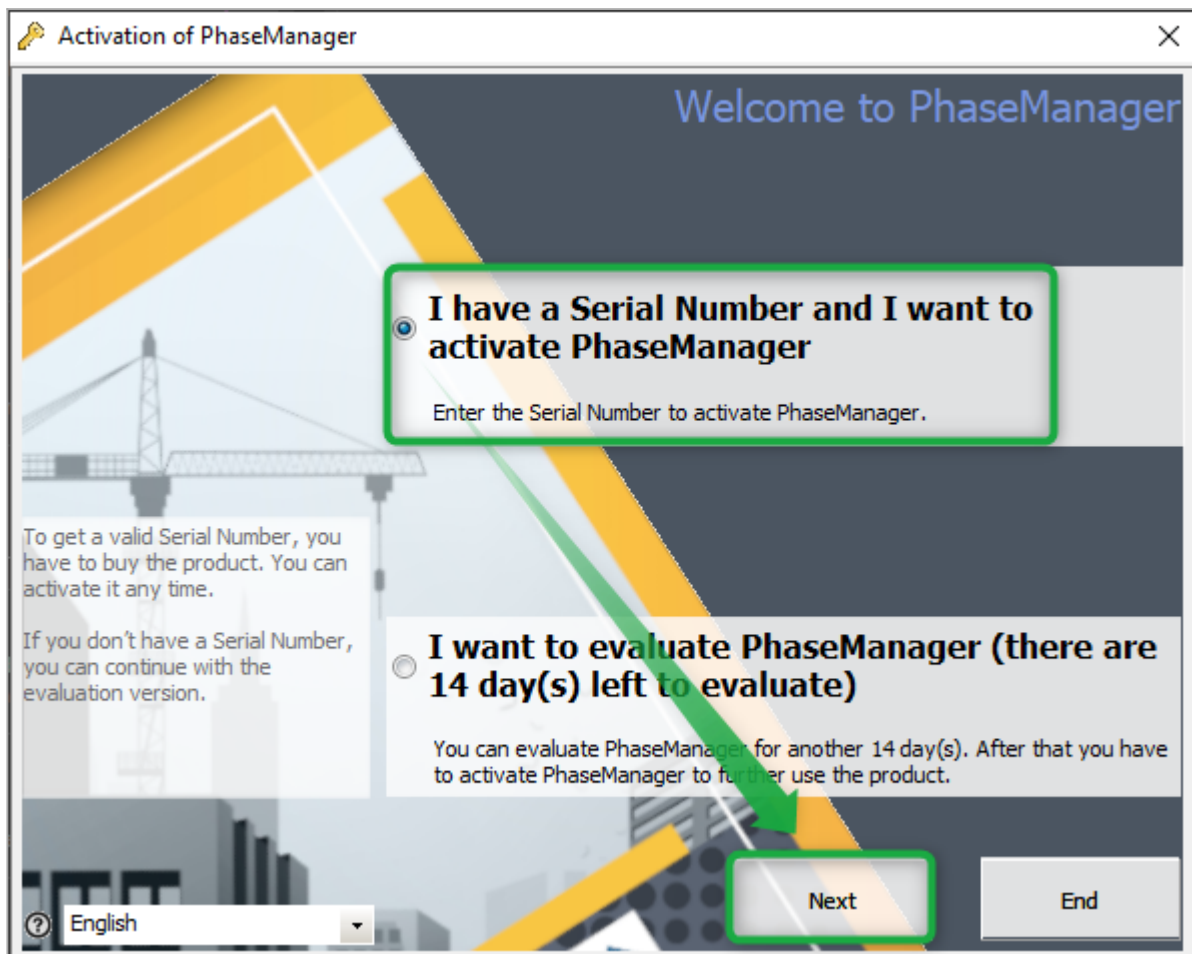


3/ License activation

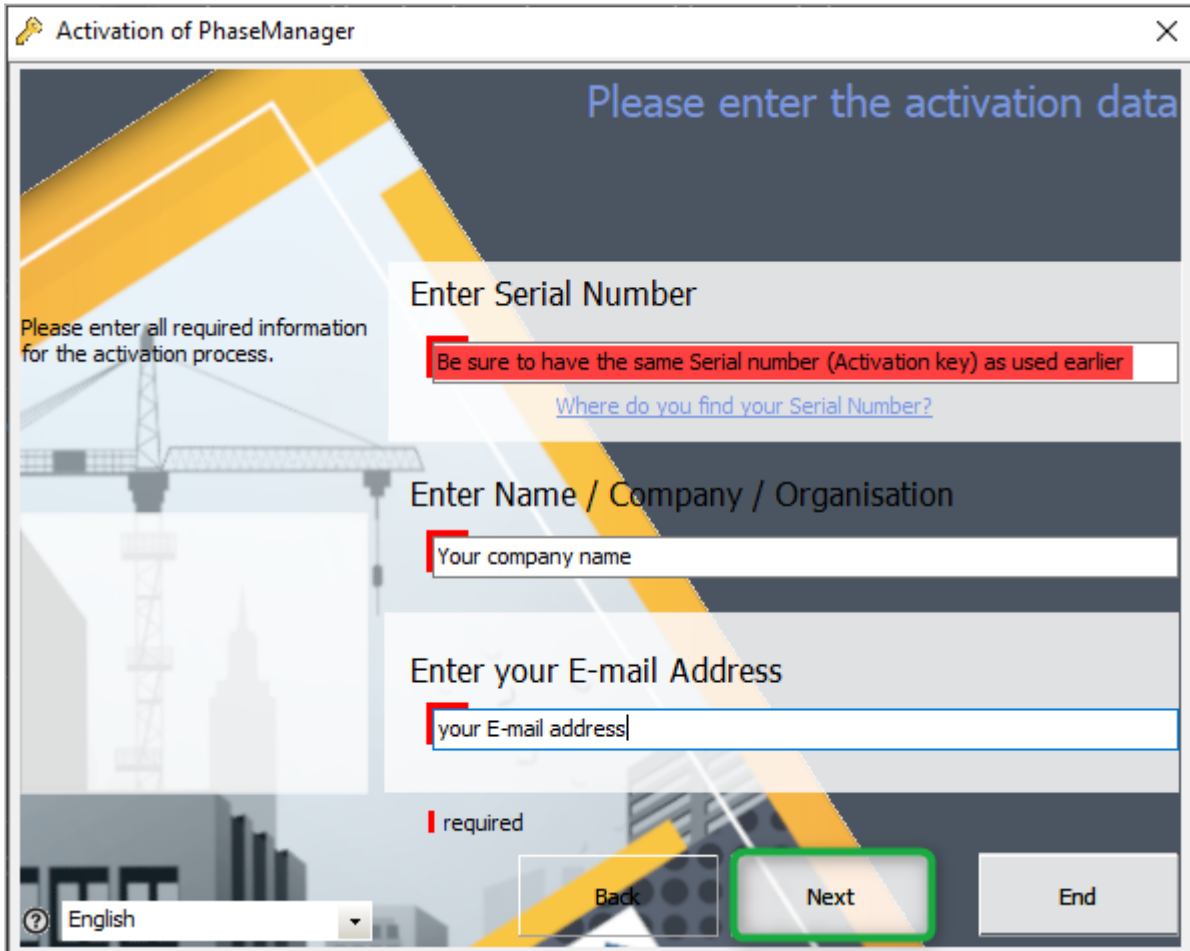
Click now on the button **Launch** to activate your licence.

Beware : an Internet connection is mandatory to activate the license !

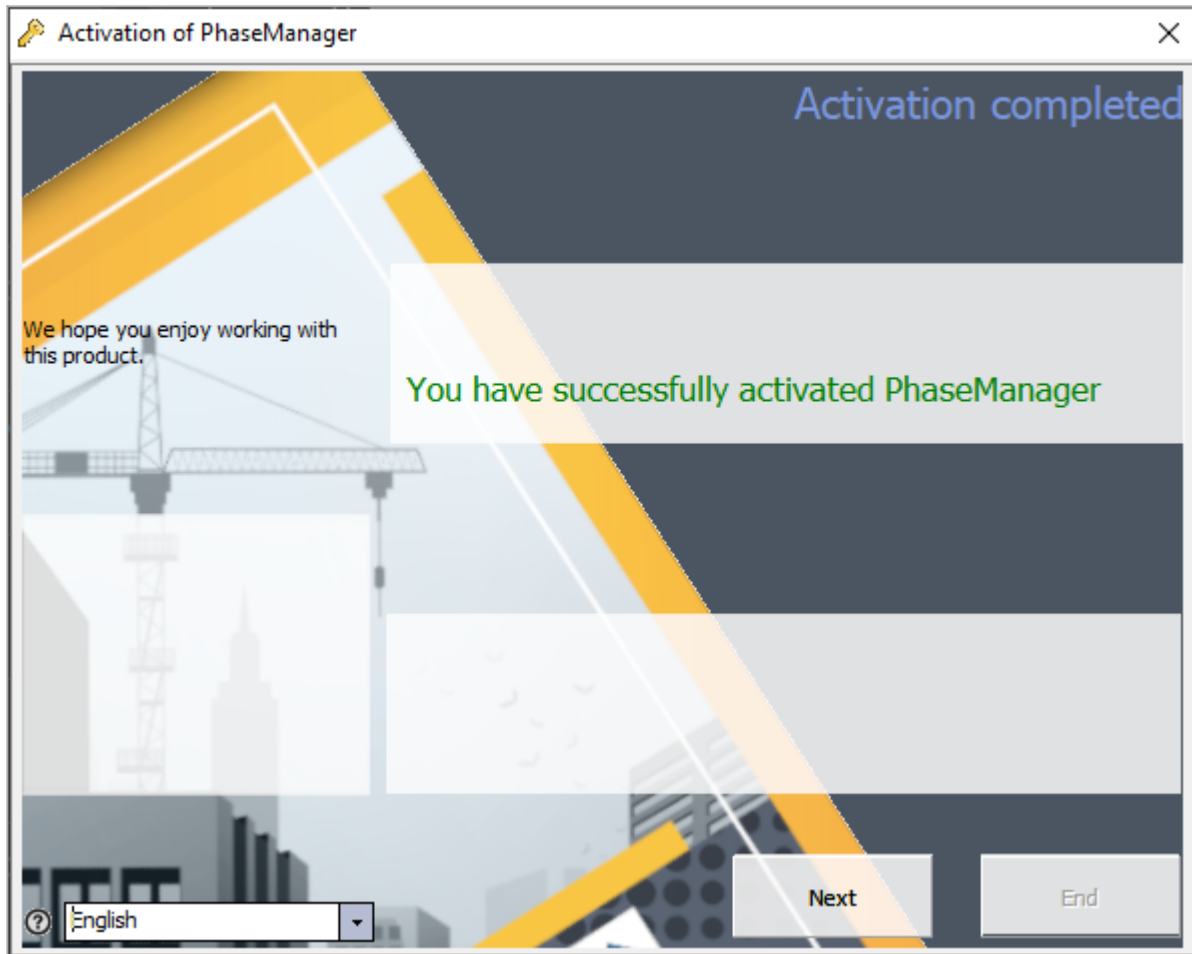
To activate the license, switch to English then choose the option below and click on **Next** :



- Fill-in all required data then click on Next:
- **The Serial number is the Activation Key that's been used at step 2 in the license configurator**



- Check that you ARE connected to INTERNET then click on Next twice.
- If the following message is displayed, that means that Phase Manager did activate right. Click on Next to run Phase Manager:



- If you need to, feel free to contact our customer support at support@projetlineaire.com