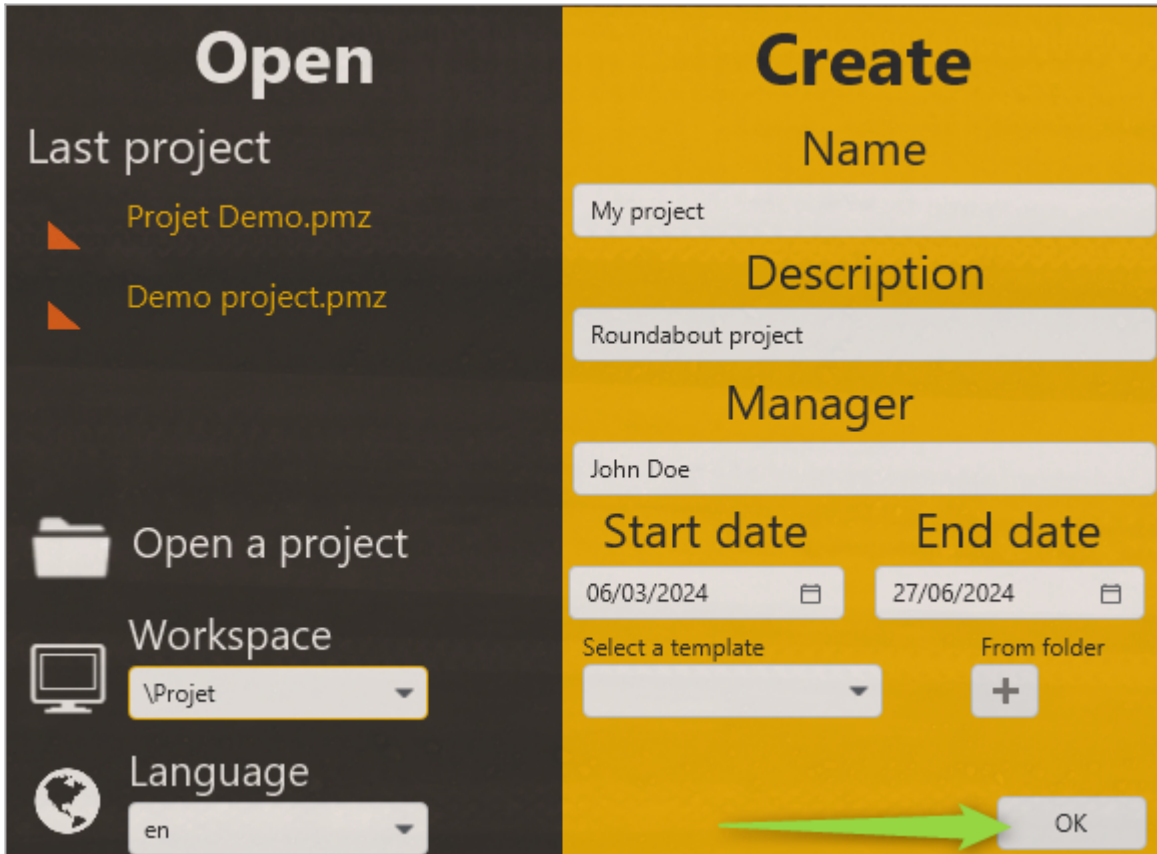


Step 1 : Creation of the drawings

In this tutorial, we're going to work on the development of a roundabout.


The necessary files are in the /Tutoriel directory of your installation folder.

We therefore invite you in the first window to setup the project fields like in the following screen capture, then click on OK:

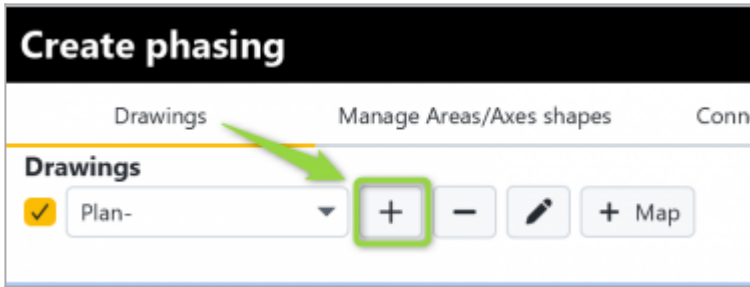


You are now on the Phase Manager main screen.

You are now going to import the file *Projet Demo.svg* which is in the *Tutoriel* folder of your Phase Manager installation.

Using the button  in the left side menu, go to the **Create phasing** interface then proceed to the drawing importation:

To add a drawing click on the + button in the **Drawings and phases** tab of the *Create phasing* interface:

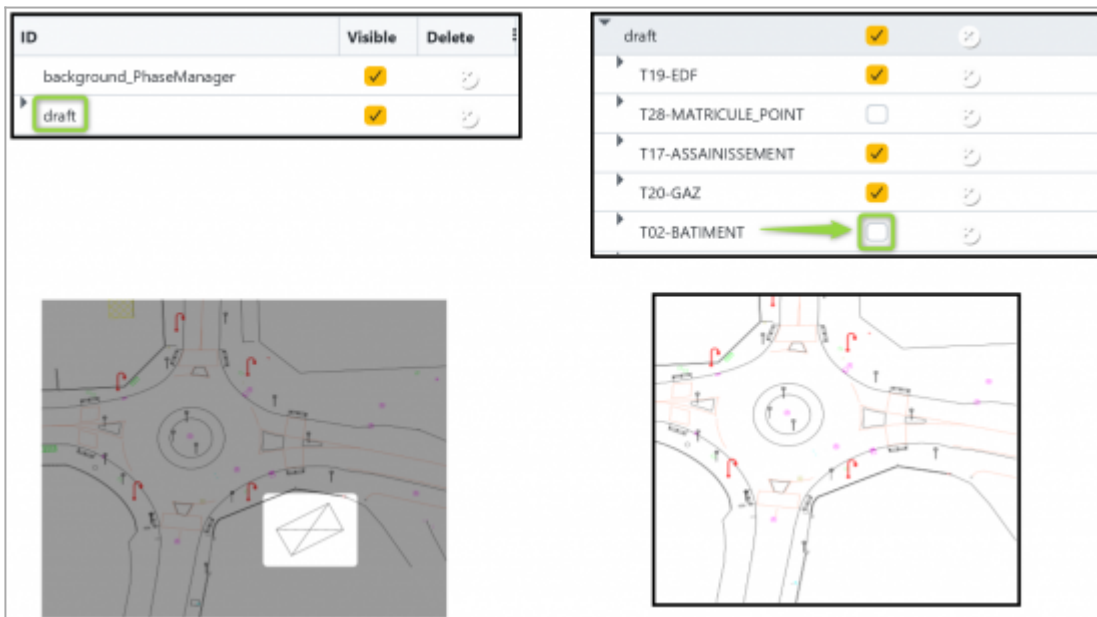


After graphics loading, the drawing and its nodes appears in the editor.

How to import a drawing

You're now going to hide in the drawing editor the secondary facilities (located southeast of the roundabout) that are related to the 'T02-Bâtiment' object:

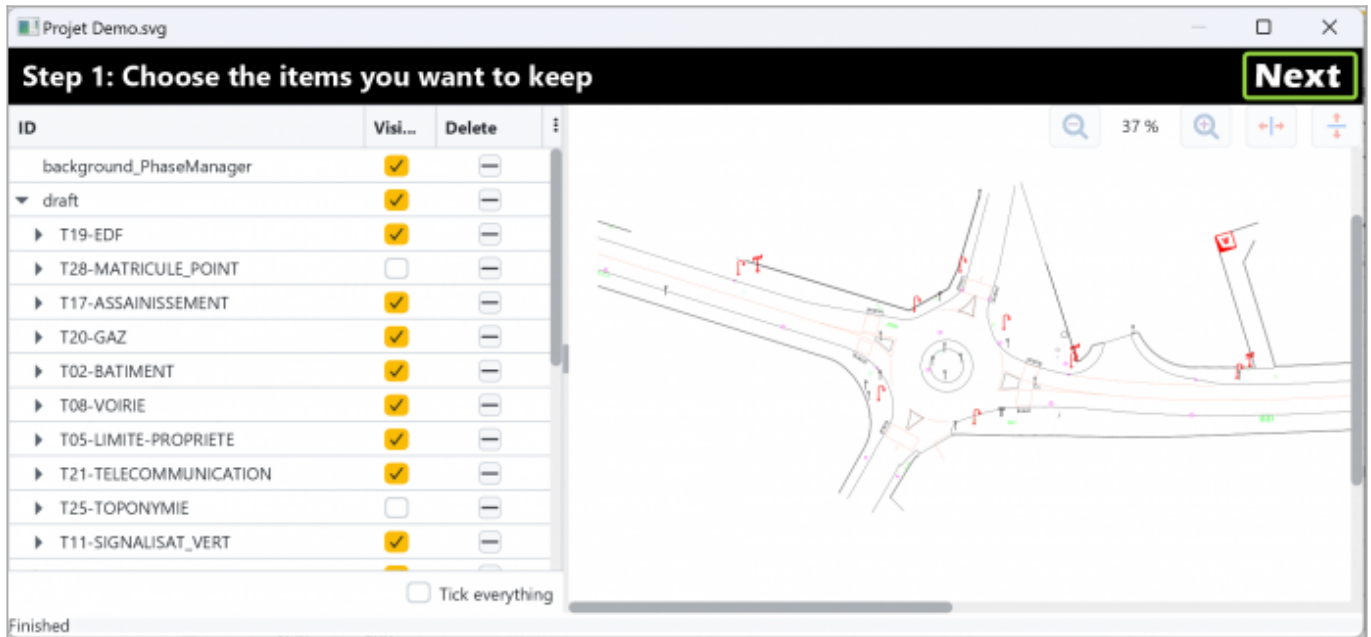
In the left panel double-click on the root object of the drawing (here « draft ») to open layers, then untick the visibility of the object you want to hide (here 'T02-BATIMENT') :



Hiding objects on the drawing

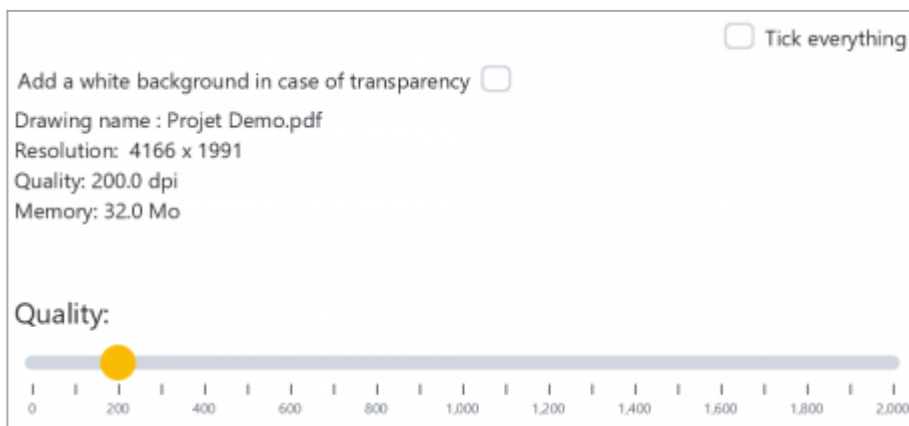
You are going to save your drawing as your initial situation one (with the secondary facilities hidden) and name this drawing « Initial situation ».

To save a drawing, click on Next in the plan editor:



Map quality

Set the quality of the map in Step 2 then click on Next



The map will be displayed again in the georeferencing interface in Step 3 which is characterized by the placement options at the bottom left:

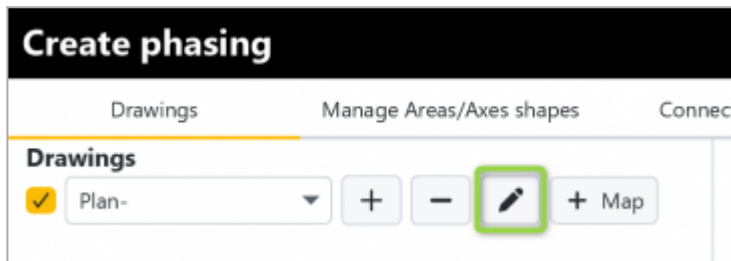


note: the georeferencing introduced with GIS in Phase Manager 4 [is described here](#).

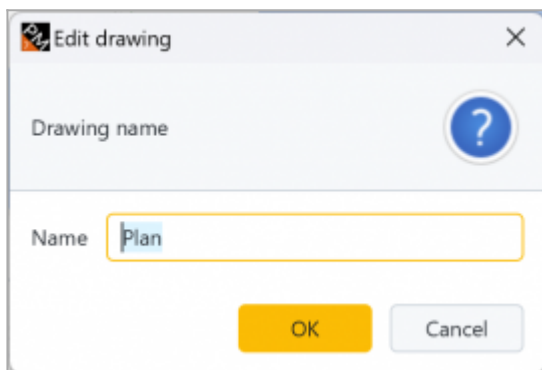
In this example we are not going to georeference the drawing and we click on **Done** in the right top corner.

[Saving a drawing](#)

Back in the *Create phasing* interface, select your newly imported plan and click on the “Rename” button:



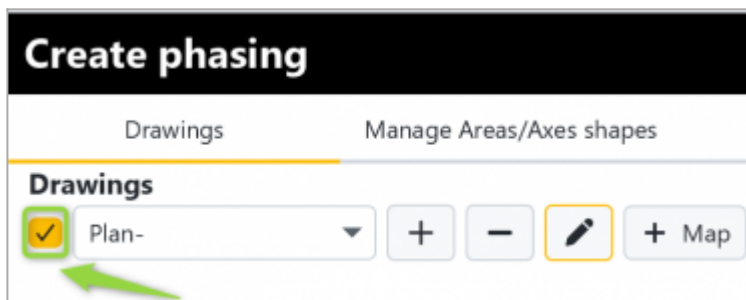
In the window that opens, modify the name of the drawing then click on OK:



[How to rename a drawing](#)

Specify the Initial situation plan to be the default plan :

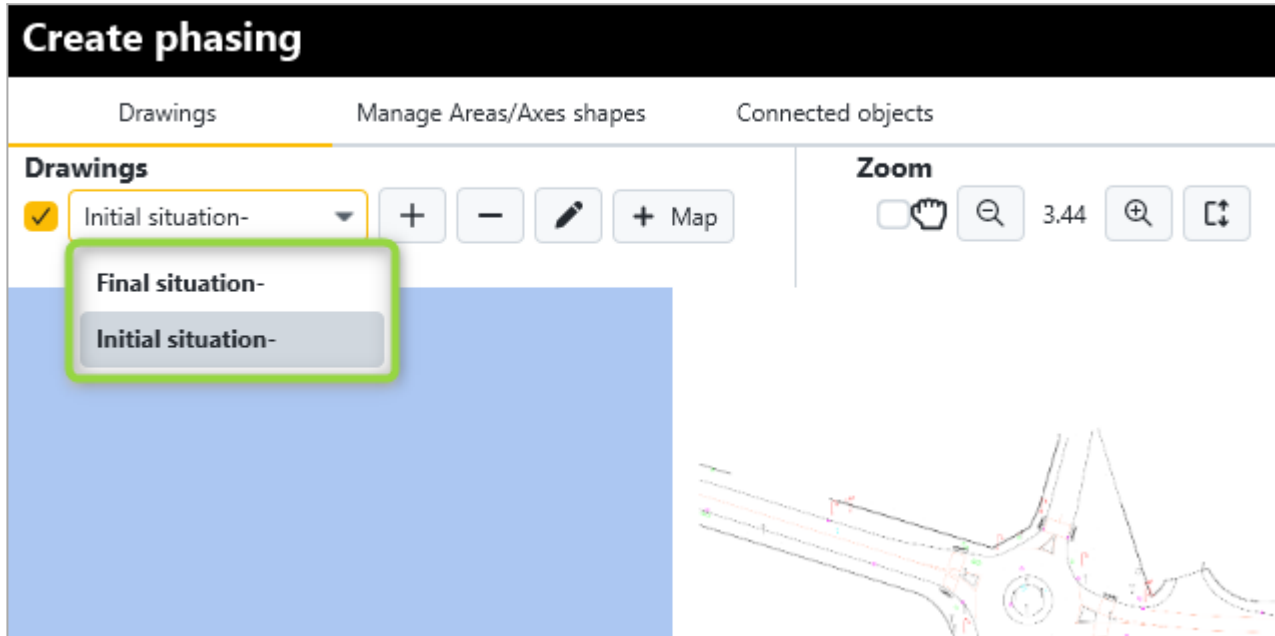
If more than one drawing is available, specify the default drawing by means of the checkbox located to the left of the drawing name:



[Defining the default drawing](#)

Now repeat the drawing import operation in the same way (still with the Project Demo .svg file) but this time **without hiding the buildings and naming this second plan “Final situation”**.

You now have your two drawings available in the Create phasing interface:



You can now head to [Step 2](#) of this tutorial !